



CHERTSEY / SURREY

The new focal point to your lifestyle.

Nestled in the heart of Chertsey you'll find Nexus – a contemporary collection of one and two bedroom apartments artfully designed for modern living. Moments from Chertsey's bustling high street yet close to tranquil leafy countryside, this stunning new gated development offers you the perfect mix of town and country life.

WELCOME



Relaxed riverside living.

DISCOVER CHERTSEY

Set on the banks of two rivers – the Thames and the Bourne – the attractive market town of Chertsey sits in the sought-after borough of Runnymede. Alongside the scenic waterways and heritage architecture you'll find vibrant cafés and restaurants, independent boutiques and artisan shops plus life's essential amenities. The area is home to superb schools and offers terrific transport links – central London is under an hour away by train and getting from A-to-B by road is made easy thanks to the M3 and M25 nearby.

Plenty of things to see, do & eat.

The ideal location of your new home offers something for everyone.



A

Chertsey and the surrounding areas are bursting with life. Whether you want to spend a morning walking along the river, an afternoon of shopping or an evening of gastronomy, you'll be spoilt for choice.

For a right royal day out, head to nearby Windsor Castle – the official home of The Queen (she reportedly spends her private weekends here) and the oldest and largest occupied castle in the world. Walk the Royal Mile, marvel at the state apartments and watch the changing of the guard or immerse yourself in Tudor times at the former residence of Henry VIII, Hampton Court Palace. Visit the apartments which were home to the infamous king, his wives and children and explore the 60 acres of historic gardens.

Time to indulge in a spot of retail therapy? Chertsey high street has a boutique vibe – and for the real shopaholics, the nearby towns of Weybridge, Woking, Guildford and Kingston offer all the high street giants plus some independent gems.

Independently owned and individually styled, Three Horseshoes is a smart yet comfortable pub that welcomes drinkers and diners alike. Serving delicious, freshly prepared food all day, it's the perfect place to cosy up by the fire in winter or enjoy al fresco drinks in the summer.

For a real treat, The Tudor Room at Great Fosters serves Michelin-starred cuisine in sophisticated surroundings. The intimate setting – the restaurant only seats 22 diners – is the perfect backdrop to the award-winning food, which is described as classic with a modern twist and showcases local, seasonal ingredients.

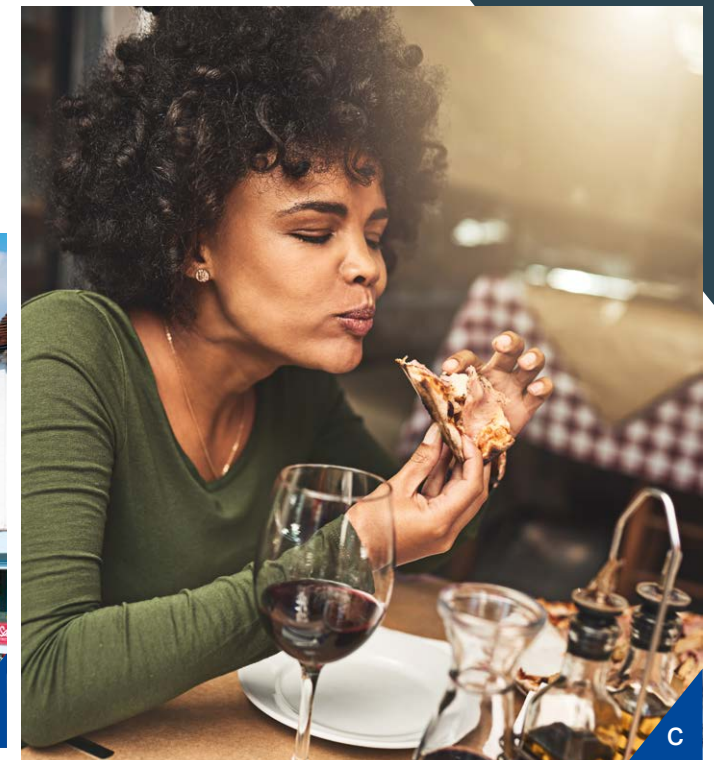
If you like your cocktails accompanied by live music, then head to Chertsey's Caspari restaurant and bar. With a love of good food and a passion for ensuring guests have a good time, Caspari is the ideal venue for a celebration.

Osso Buco in nearby Weybridge is everything you want from a traditional Italian – relaxed, friendly and with a mouth-watering menu. Run by husband-and-wife duo Elena and Ali, this warm and welcoming restaurant has become a firm favourite with the local community and is famed for its generous portions and authentic flavours.

DISCOVER CHERTSEY



B



C



D



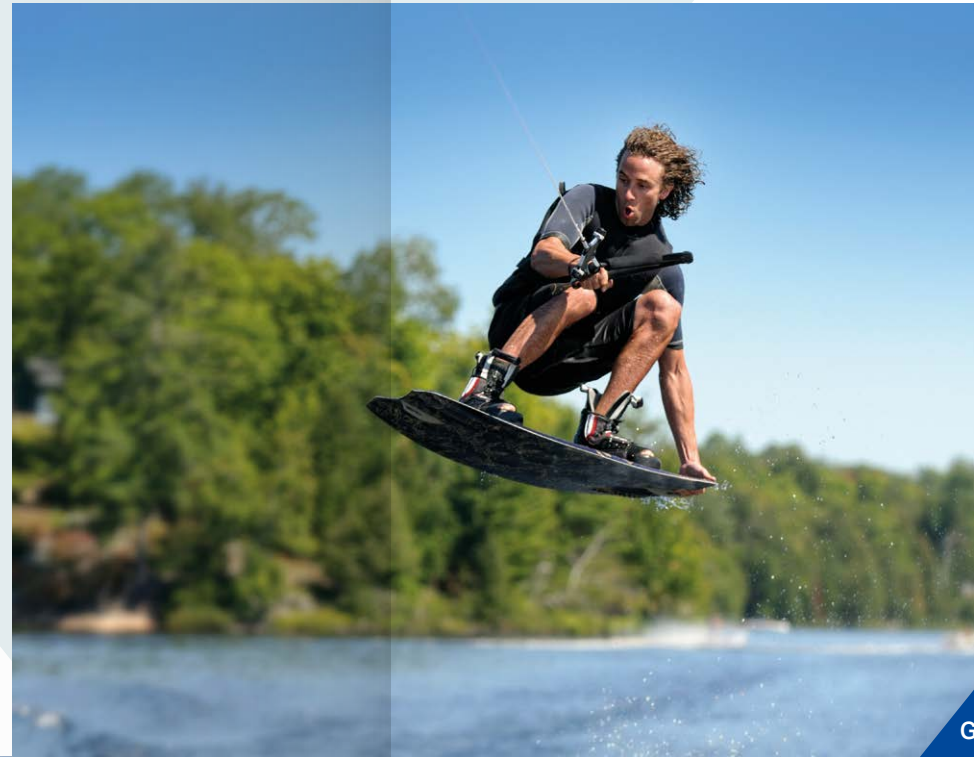
E

A/ Windsor Castle
B/ High Street
C/ Three Horseshoes
D/ Caspari
E/ Tudor Rooms

DISCOVER CHERTSEY



F



G



H



I

F/ Chertsey recreation ground
G/Thorpe Lakes watersports
H/ Chertsey Meads
I/ Foxhills Country Club & Resort

Chertsey is surrounded by the great, green outdoors. From parks to riverside walks, you are never far away from open countryside or leafy retreats. And for outdoor activities, the area offers a range of sports both on water and dry land.

With such a beautiful waterside setting, it's no wonder so many people take to the river in Chertsey. Glide along the Thames in a motorboat from Chertsey Meads Marine Hire, or try your hand at the Chertsey traditions of rowing, punting or skiffing. If you're more of a riverside spectator, don't miss the annual Chertsey Regatta, which has been held on the river for 150 years.

If you want to be even closer to the water, zip up your wetsuit and have a go at waterskiing or wakeboarding at Thorpe Lakes watersports resort. With activities for the whole family to enjoy – including an inflatable aqua park – the resort offers safe, sheltered waters and even a beach!

On the doorstep of Nexus you'll find Gogmore Farm Park, with its multi-sports courts, play areas and fishing platforms on the River Bourne which runs through the park. Sports enthusiasts can find football and cricket pitches, putting and bowling greens and floodlit tennis courts at Chertsey Recreation Ground, which also offers a great children's play area and a paddling pool in the summer months.

For something a little more laid back, relax and unwind in the 175 acres of Chertsey Meads, a tranquil haven of wildflower meadows, walking trails, bridleways, cycle routes and picnic areas. If you want to stretch your legs a little further, The Thames Path – which crosses Chertsey Bridge – stretches from Gloucestershire to the Thames Barrier and is popular with walkers and cyclists.

Or for pure escapism, join Foxhills Country Club and Resort, which prides itself on providing an oasis of calm for its members. It boasts two championship golf courses, one par-three course (the first of its kind in Britain), 11 tennis courts, four squash courts, four swimming pools, a gym, a health-spa and a cycling club. Oh and four award-winning restaurants too!



Light, bright & sleek.

The interior of each apartment has been thoughtfully designed to create stylish, low maintenance living. Expansive windows and open-plan layouts maximise space, while contemporary fixtures and fittings add to the quality feel of our homes. All you need to do is unpack and relax.

Kitchen

Bespoke fitted kitchen with soft closing doors/drawers white composite stone worktops and upstand integrated Siemens appliances which include:

- Fridge/freezer
- Stainless steel single fan oven
- Washer/dryer
- Dishwasher
- Induction hob

Bathroom & Ensuites

- Lusso stone wall hung sink in matte white with Lusso Luxe matte black mixer tap
- Lusso Luxe thermostatic shower set with handheld shower head in matte black
- Vitra rimless wall hung toilet and dual flush plate
- Low profile shower tray with toughened matte black shower frame
- Recessed mirror cabinet
- Porcelain tiling to wet areas

Details of finish

- Flush satin white veneer doors with brushed chrome furniture
- Engineered oak wood flooring in living areas with carpet in bedrooms

Lighting & Electrical

- Energy efficient lighting
- Multi socket (power/aerial/satellite/BT) to living room
- Wired for Sky+
- TV point to bedrooms
- Mains operated smoke detectors with battery back up
- Slimline white sockets and switches
- Video intercom door entry system

Windows

- Double glazed windows with lockable fasteners and easy clean hinges

Heating

- Electric panel wall radiators with digital thermostatic controls

Smart technology

- Smart enable technology integrated within apartment so lighting and hot water can be controlled from a mobile device



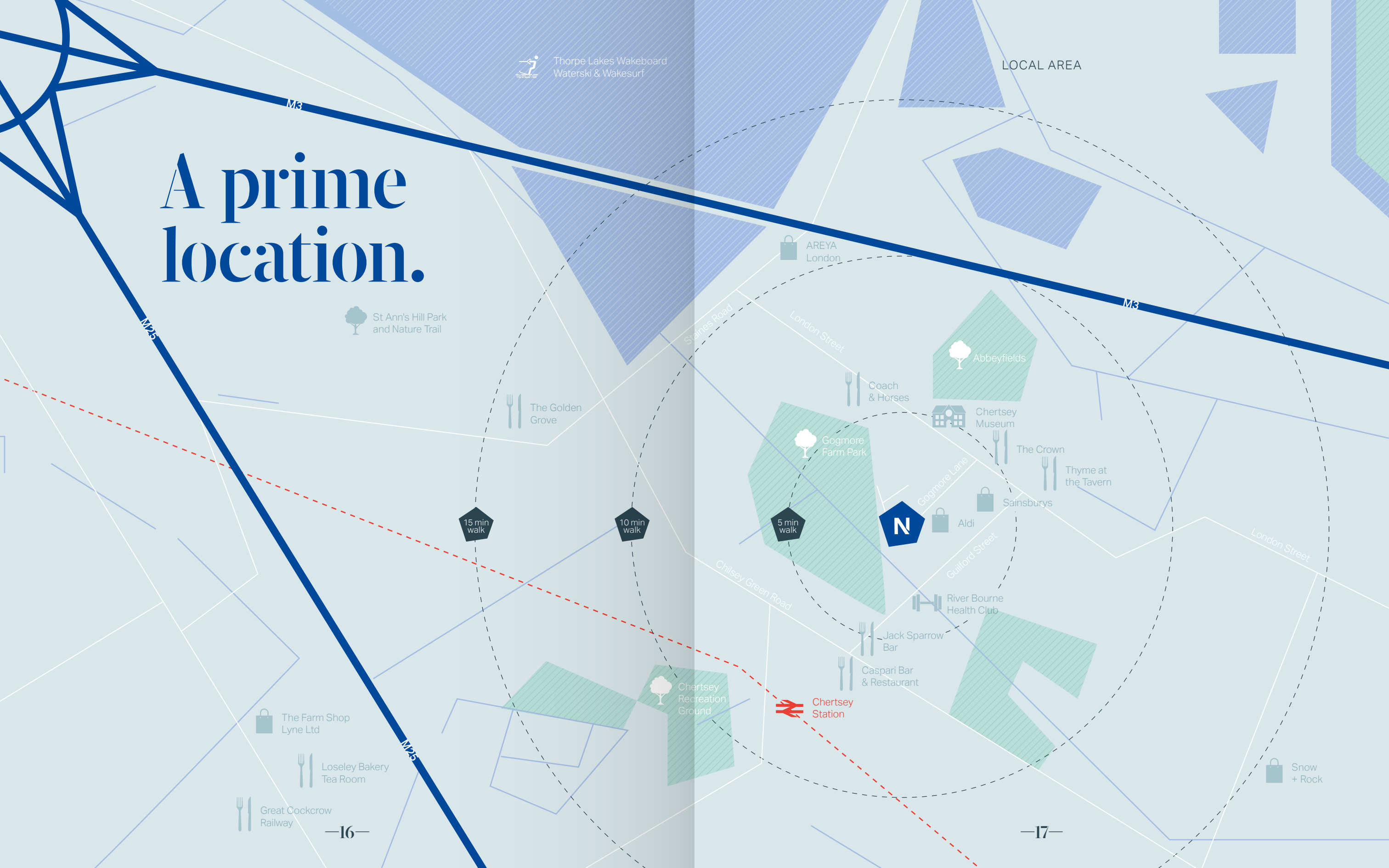
Convenience without compromise.

We have 37 innovative homes to choose from, ranging from one bedroom to two bedroom apartments, each with secure private parking. Finished to the very highest standard, each property has been cleverly planned with practical living in mind – and all are available through Help to Buy, making it even more affordable for you to make your move to Chertsey.

THE DEVELOPMENT



A prime location.



Effortless connections.

TRAVEL



Times taken from Google maps / Rail times are taken from Weybridge Station



Ground Floor

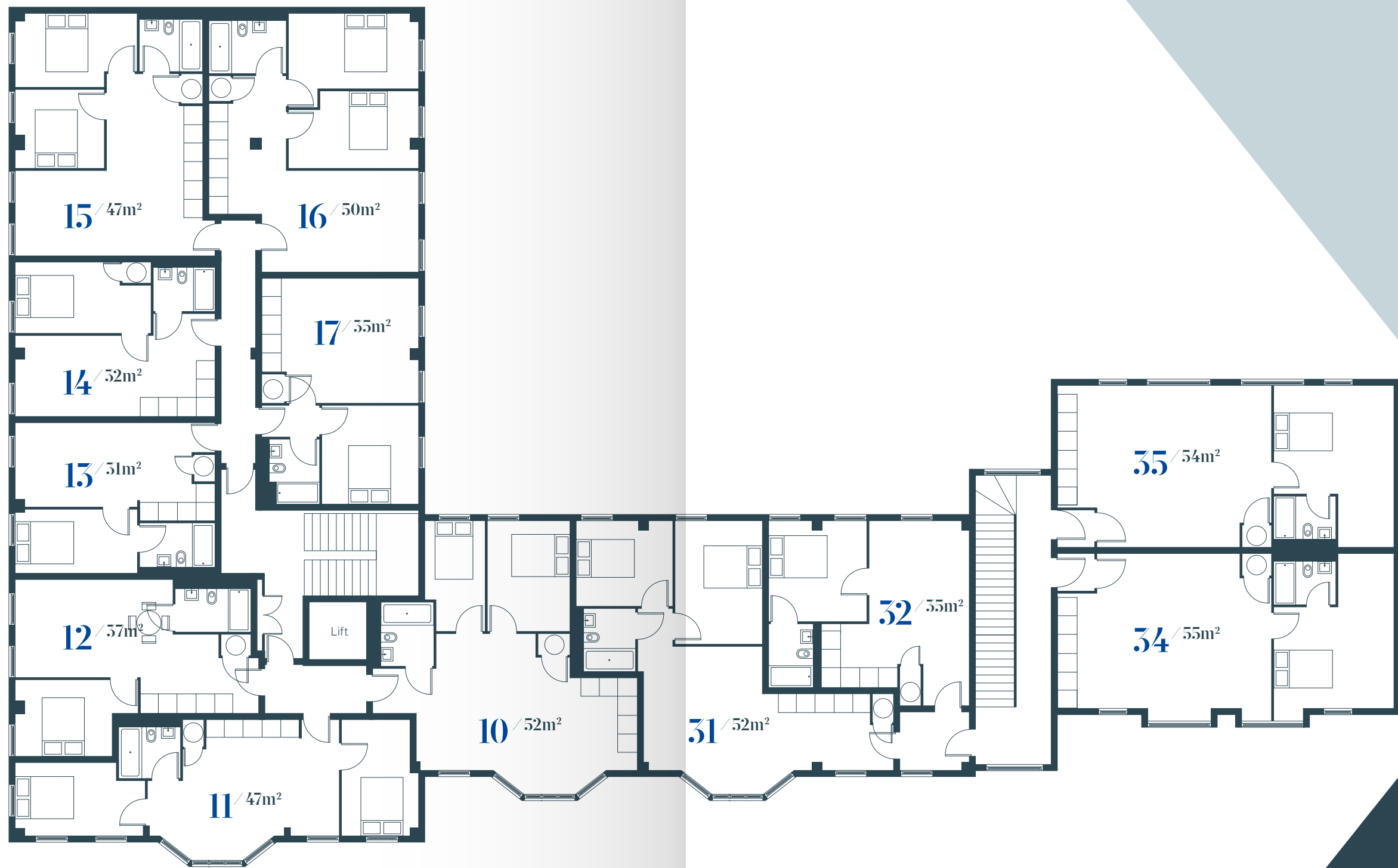


Main Entrance

Designed
for modern
living.

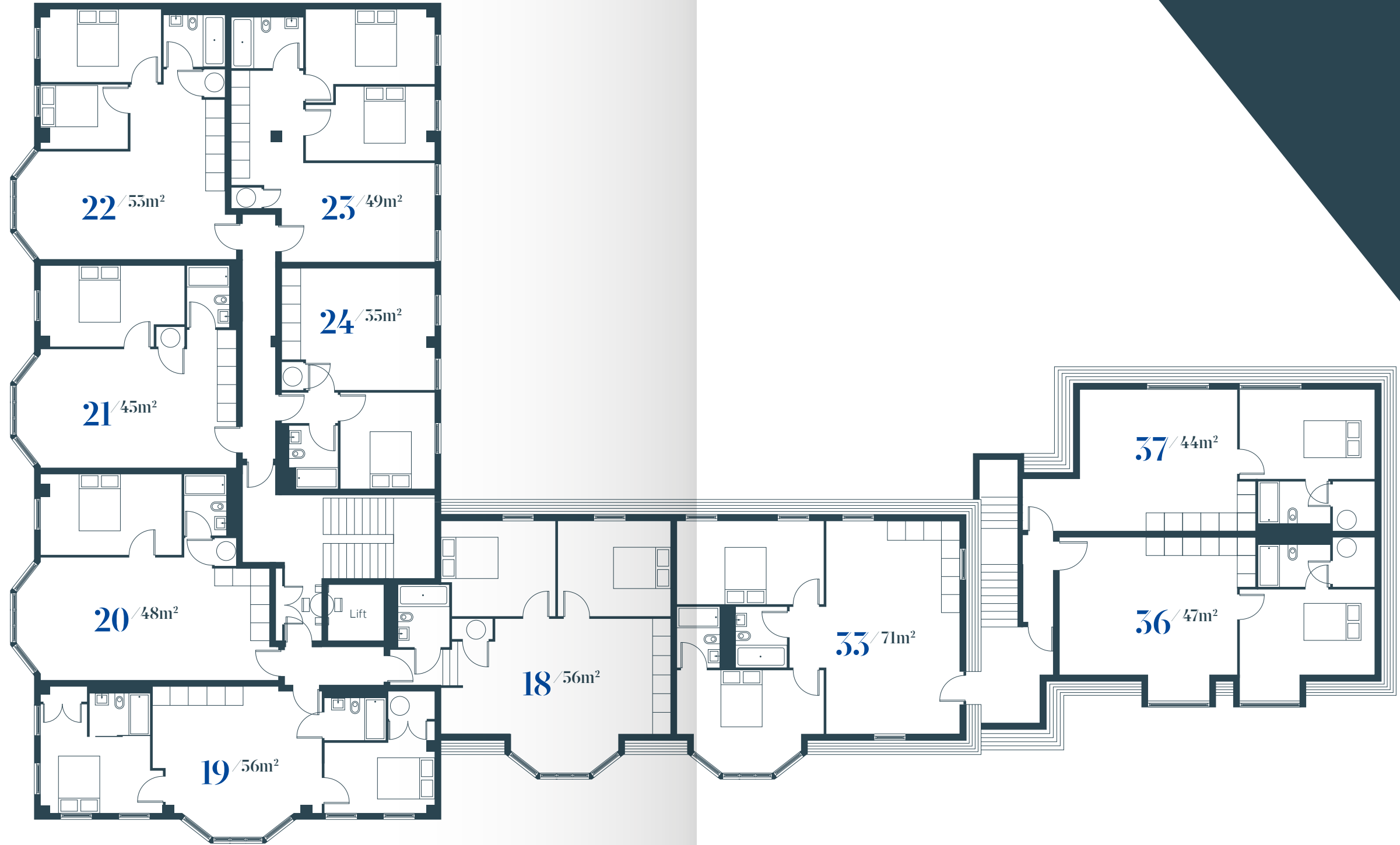


First Floor



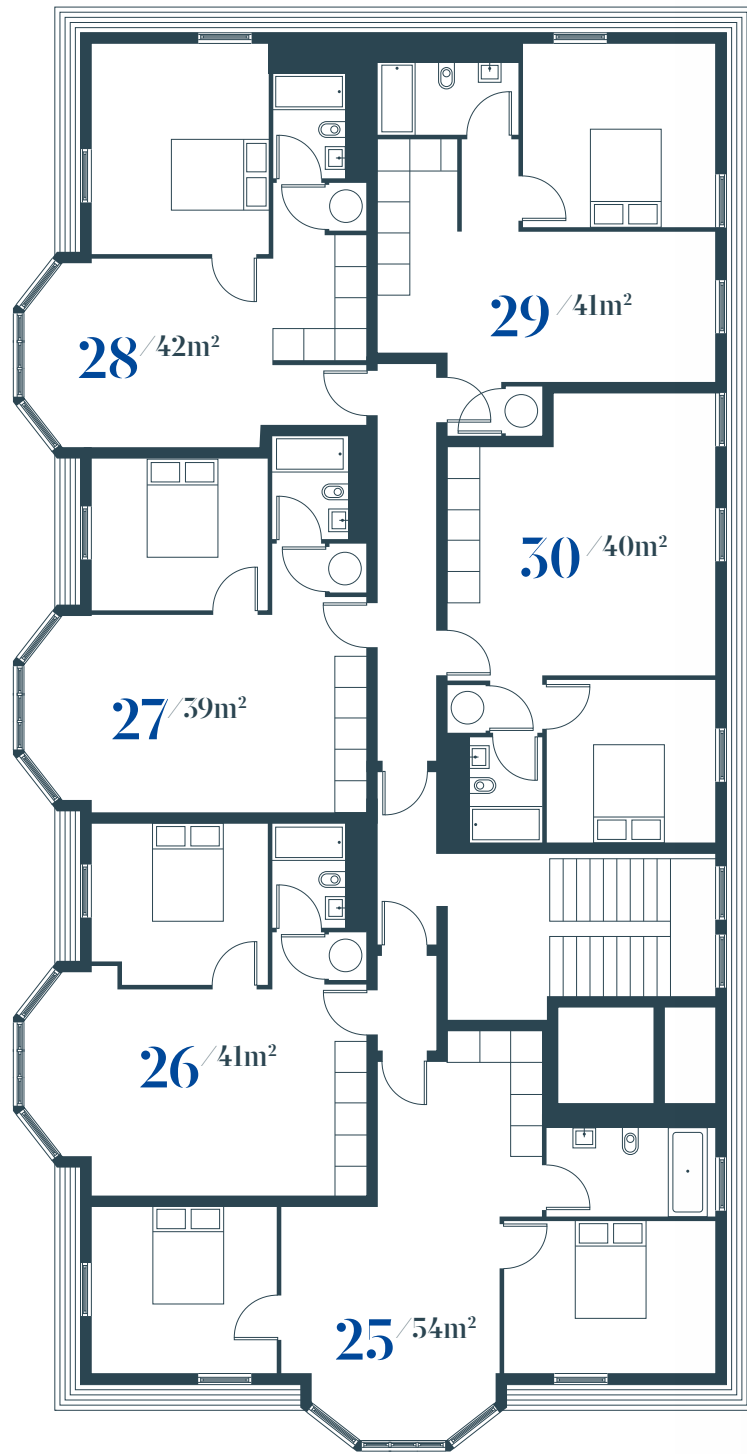


Second Floor





Third Floor



PLEASE NOTE that all information within this brochure is materially correct at the time of print. This brochure does not constitute any part of an offer or contract or constitute a warranty, so any interested purchasers, lessees or Third Parties should be aware that all elements are subject to change. Furthermore, all images and floor plans within the brochure are for indicative purposes only and may vary.

All sizes are subject to some tolerance. Kitchen and bathroom layouts are indicative only. Please contact our Sales Team for apartment dimensions and layouts.

nexus
apartments
.co.uk

Another development by
The Life Less Ordinary Group



LIFE LESS ORDINARY